



The University of
Nottingham

Richard Masterman

Director, Research Innovation Services

Working with partners in China

14 July 2009

Today



The University of
Nottingham

- Overview of the University of Nottingham in UK, China and Malaysia
- Building the China Campus in Ningbo
- Student recruitment
- Research with and in China
- Innovation and knowledge transfer
- Conclusions



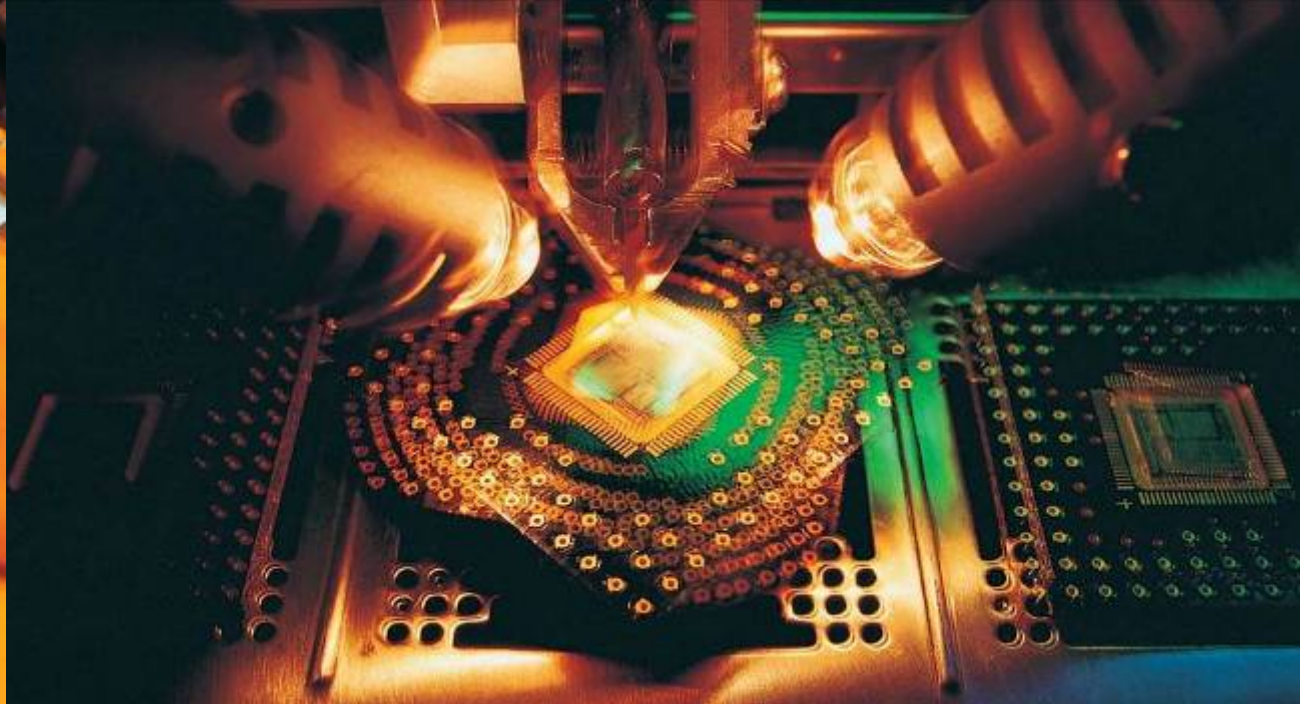
Nottingham now has 37,000 students, with over 30,000 based in the UK. This includes over 14,000 international students from >147 different nations. 45% of our international students are at the University of Nottingham, Ningbo China and University of Nottingham Malaysia Campus.





Teaching and learning

- Core to the University's mission
- We combine established delivery with interactive and web-based methods
- Programmes are modular and flexible.
- New teaching, learning and support facilities are state of the art
- We have strong links with business and industry
- China, Malaysia and our Universitas 21 partners offer unique mobility opportunities



- The analysis of RAE 2008 by *Research Fortnight* ranked Nottingham 7th in the UK for research power.
- 23 of Nottingham's units were ranked in the top 10 for research.
- In 2007/8 awards to fund world-class research at The University of Nottingham exceeded £130m.
- Research Centres are now being established in China and Malaysia and increasing amounts of competitive funding being won.

University Structure



The University of
Nottingham

- Broad-based University:
Arts, Humanities, Law, Business, Social Sciences,
Education, Medicine & Veterinary Medicine plus
Sciences, Engineering, Agriculture & Food.
- 27 Excellent teaching assessments.
- Over 37,000 students
 - ~7,000 Postgraduates
 - ~14,000 international students
 - >147 different nations
- Over 1,500 Academic staff

University Scope - Financial



The University of
Nottingham

- ~£460m turnover pa
- >£400m portfolio in research awards > 2,100 research projects
- 10% with industry ranked in the top seven in the UK
- Academic departments and research represent over 60% of expenditure, these costs underpin the growth in income
- The University has invested consistently in its research & teaching infrastructure and student facilities averaging over £40m p.a.
- Innovative international expansion programme – particularly the campus developments in Malaysia and China



- Change of law in 2003
- First to get a license
- Not for profit organisation
- Official opening in 2006
- Partnership with WEG
- Long standing interest in China
- Chinese Chancellor
- Nottingham China Policy Institute
- China research links









宁波诺丁汉大学2007年毕业典礼

2007 Graduation Ceremony of The University of Nottingham Ningbo, China



2007.11.21

Mission



The University of
Nottingham

- The University of Nottingham, Ningbo is the first Sino-British University – a bold initiative. We are a hybrid, fusing the strengths of Higher Education in two historically different but very friendly countries. Our mission is to chart new territory in offering a truly international, world-class university – world-class Faculty, world-class research and research-led teaching. The University will draw on Western traditions and recognise Chinese priorities.
- By aligning national priorities in China with internationally-recognised research strengths, we will develop a university that makes a major contribution in knowledge transfer to China's social, economic and scientific development.

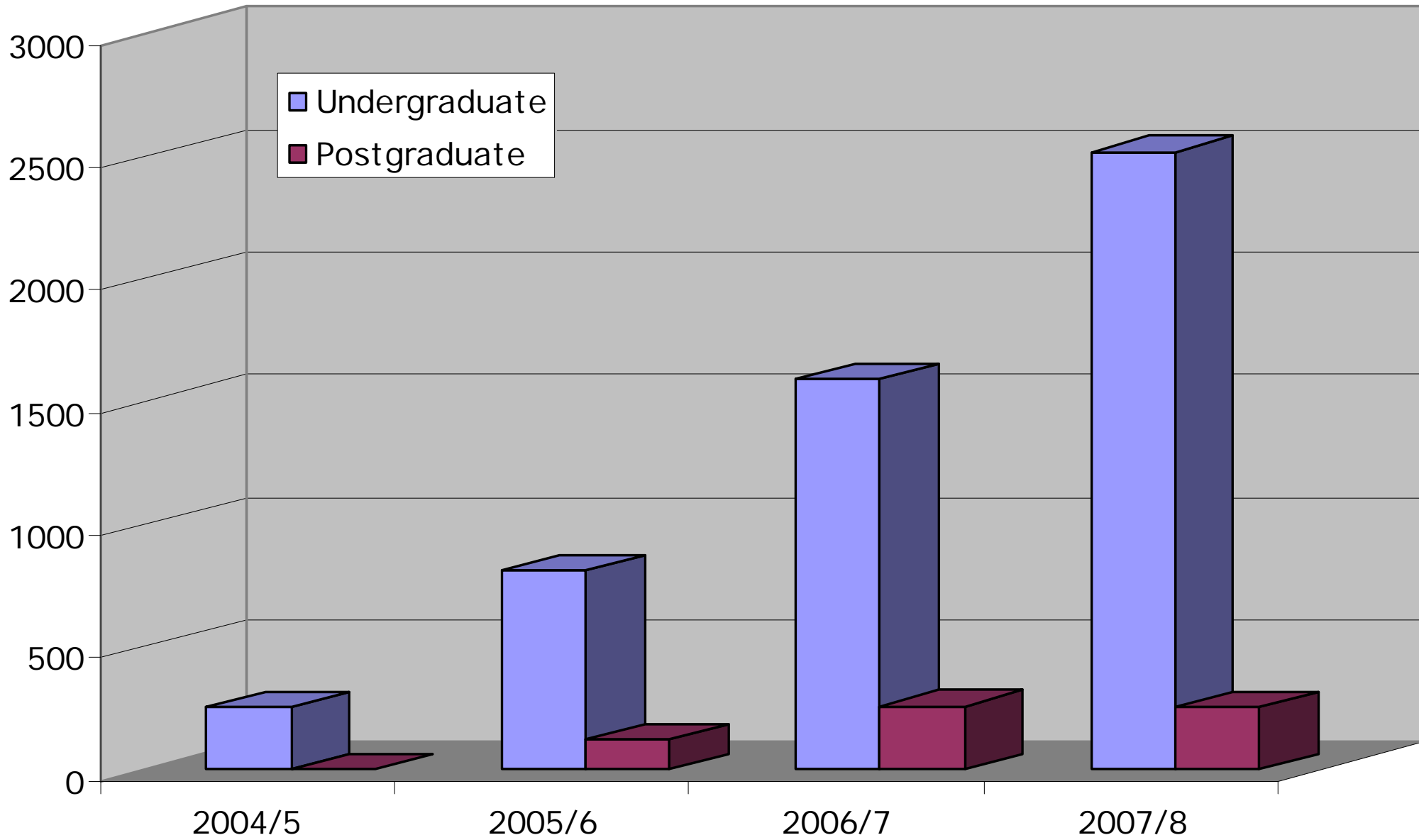
Mission (cont...)



The University of
Nottingham

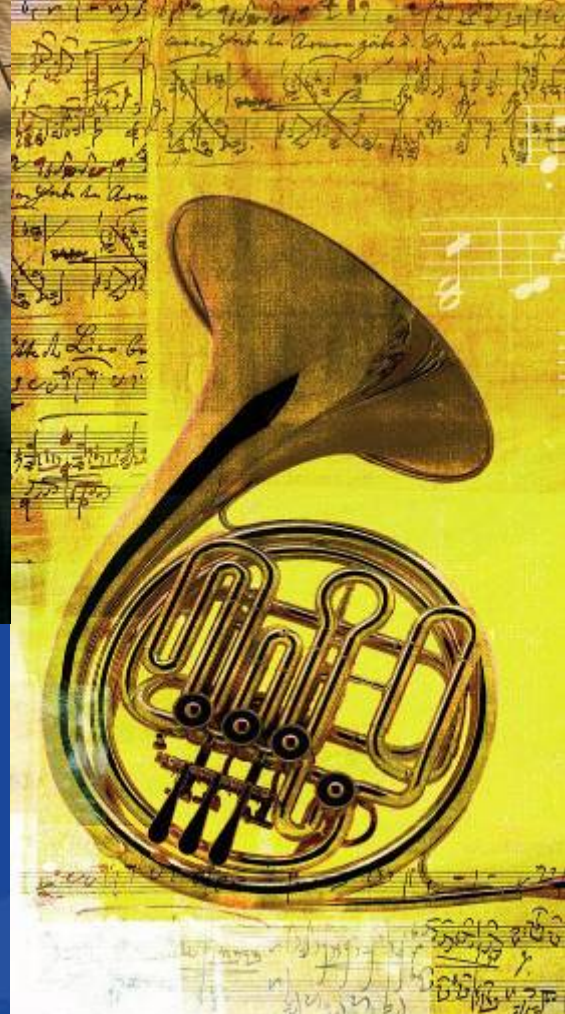
- In selecting international Faculty and students, the University will benchmark against the best universities in the world. In adapting ethical research protocols, progressive pedagogical methods, and policies for guiding staff and students, the University will be a model for other Universities. The commitment to Research and Internationalisation will inform all our activities.
- The bold initiative in establishing a new hybrid will grow a new strong plant that will bear new and rich fruits to the benefit of China and the Internationalisation of Higher Education.

Growth in Student Numbers - China





- 4 year UG courses – level one Guokao
- Started off as liberal arts
- Now includes Engineering, Sustainable Development, Interpreting
- Recent PhD licence and split site
- Fees lower than international UK fee
- Partner operates logistics
- Planning for growth to 8000 students



University Research



Research Building



The University of
Nottingham



沿河透视图

Research collaborations with China



The University of
Nottingham

The University has many well-established research partnerships with top Chinese universities and institutes.

These include:

Space Geodesy - A partnership between Civil Engineering and the Chinese Academy of Surveying and Mapping on satellite navigation – the Galileo programme.

Hydrogen Storage - Mechanical Engineering has a collaboration with the Shanghai Institute of Microsystems and Information Technology on hydrogen storage

Plant Biotechnology - Scientists at Fudan, Shanghai Jiaotong and Nottingham have established The Fudan-SJU-Nottingham Plant Research Centre - to facilitate progress in plant biotechnology.

UK-China GeoNet – network lead by Nottingham to promote international exchange of cutting-edge research in geotechnical engineering and brings together leading groups in China and the UK.

TCM - The Nottingham UK-China Collaboration on Complementary and Alternative Medicine is a collaboration between Nottingham, The Chinese National Academy of Sciences in Beijing and the Shanghai Centre for the Modernisation of Traditional Medicine.

Innovation China UK (ICUK)

- ICUK is a model of partnership for collaborative R&D and technology transfer supporting Chinese and UK HEIs in commercially exploiting their joint research worldwide
- £5 million funding secured from HEFCE/DTI for 2 years to fund UK end
- MoST to support activity in collaborating Chinese HEIs



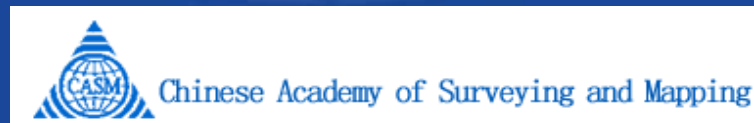
ICUK Chinese Partners



The University of
Nottingham

All Chinese HEIs are welcome to become ICUK Chinese partners.
Initial partners included:

- CAS, Tsinghua, Beijing Uni., Fudan Uni., Shanghai Jiaotong Uni., BUAA, China Ocean University, Nanjing Uni., NWPU, Xi'an Jiaotong, Tongji Uni., Beijing TCM Uni.
- Shanghai Medical Uni., CASM, Hong Kong U, Dalian Uni. of Tech., Chengdu Uni., Suzhou Uni., China Uni. of Science and Technology and Nanking University





Collaboration Development Fund to support:
Staff exchange, Feasibility studies, Proof-of-Concept

- Proof of Concept
 - Grants available to UK academics from HEFCE
 - Grants available to Chinese academics from MoST
- Joint Intellectual Property (IP) development and exploitation agreements

Knowledge Network

- Events, seminars, showcase technologies, knowledge exchange
- web-based communications



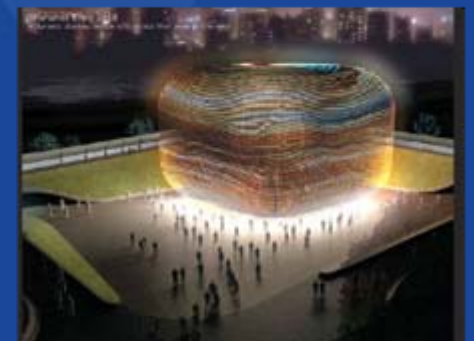
- Identifying UK and EU funding sources to develop long term strategic partnerships
- Using cross-cultural facilitators
 - To develop partnerships
 - To encourage participation
- Establishing research infrastructure in China
- Linking what goes on in UK and China
- From training to research

- *emda* funded report identified opportunities through:
- Building a culture of connectivity
- Making innovation connections work
- Investing in the capacity for innovation connections



Innovation Opportunities

- UNNC commercialisation centre
 - Sustainable technologies
- Collaborations and strategic partnerships
- Shanghai Expo 2010...
 - May-October 2010
 - Projected 70M visitors



Innovation challenges



The University of
Nottingham

- Specialist IP advice may be required
- Identifying models which bring mutual benefit
- Integration of research and its exploitation
 - Developing global models of open innovation
 - Joint ventures and spinouts
- Addressing major global challenges

Conclusions



- Bridging cultural and communication differences
- Financial, operational and staffing issues
- Teaching and learning and global mobility
- Research integrating quality, impact and connectivity
- Open innovation realising mutual benefits

'Nottingham is the nearest Britain has to a truly global university, with campuses in China and Malaysia modelled on a headquarter that is among the most attractive in Britain.' *The Times Good University Guide 2009.*